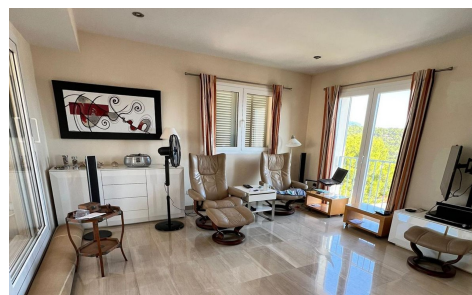


MLS86669R



Penthouse in Palma De Mallorca

€1,200,000



3



3



193m²



N/A



Penthouse La Bonanova with views of Palma de Mallorca. Situated on a large urban plot in an elevated position this residential complex has excellent community facilities which include community parking and gardens with a large community swimming pool and gym with views to Castell de Bellver and the port of Palma de Mallorca. This penthouse occupies a prime position with unobstructed views of the city's harbour and the sea to the south and southwest with a backdrop of the woodland of Bellver castle. The penthouse has a living space of 176m² all of which has ample light and views, which comprises of three bedrooms with en-suite bathrooms entrance and