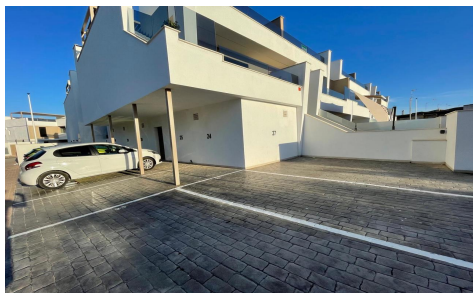


PPF39063W



Apartment in San Pedro del Pinatar

€345,000



2



2



71m²



76m²



A charming penthouse apartment on the first floor with exclusive access through an external staircase. Located in the heart of San Pedro del Pinatar, this property stands out for its spaciousness and luminosity, with 78.25 m² built and 70.17 m² usable. The layout is perfect for family comfort, with several rooms and well-defined services. In addition, you will enjoy a front terrace and a private solarium of 62.50 m², ideal for relaxing in the sun. Includes a parking space (NÂ°23) and a storage room (NÂ°3) of 2.67 m², ensuring your comfort. Located in a privileged area, walking distance to all amenities. don't miss this opportunity to...(Ask for More Details!)